

# PROVEN feeds for your "Lab" animals

## FOR RABBITS

Globe Rabbit GLOB-ETS plus hay

Globe Rabbit Feed with alfalfa, pellet form—complete.

## FOR RATS AND MICE

Dickinson's Dog Food — Nugget—Pellet—or Meal form

Dickinson's Kibbled Dog Food

Both of these feeds are dry—easy to handle

## FOR GUINEA PIGS

Globe Rabbit GLOB-ETS plus hay

Globe Rabbit Feed with alfalfa, pellet form—complete

Supplement with Vitamin C carrier three times weekly

DICKINSON'S FEEDS for small animals are approved and used by many research laboratories. They are complete feeds, uniform, fresh, conveniently packaged—dry. Their usage by you will remove one variable in your research and experimentation. The Globe brand, produced by Dickinson, is backed by over 90 years of experience. Switch now to this reliable

source for proven feeds for your experimentation animals.

## FREE SAMPLES

If you would like to test Dickinson's Globe Feeds free, write us and we will gladly send a generous sample to you. Tell us how much and what kind—we will do the rest.

## THE ALBERT DICKINSON COMPANY

2714 WEST 35TH STREET

CHICAGO 32, ILLINOIS

# MANNOSE—

*That Old "Taste Thrill"*

*Is Back From The Wars*

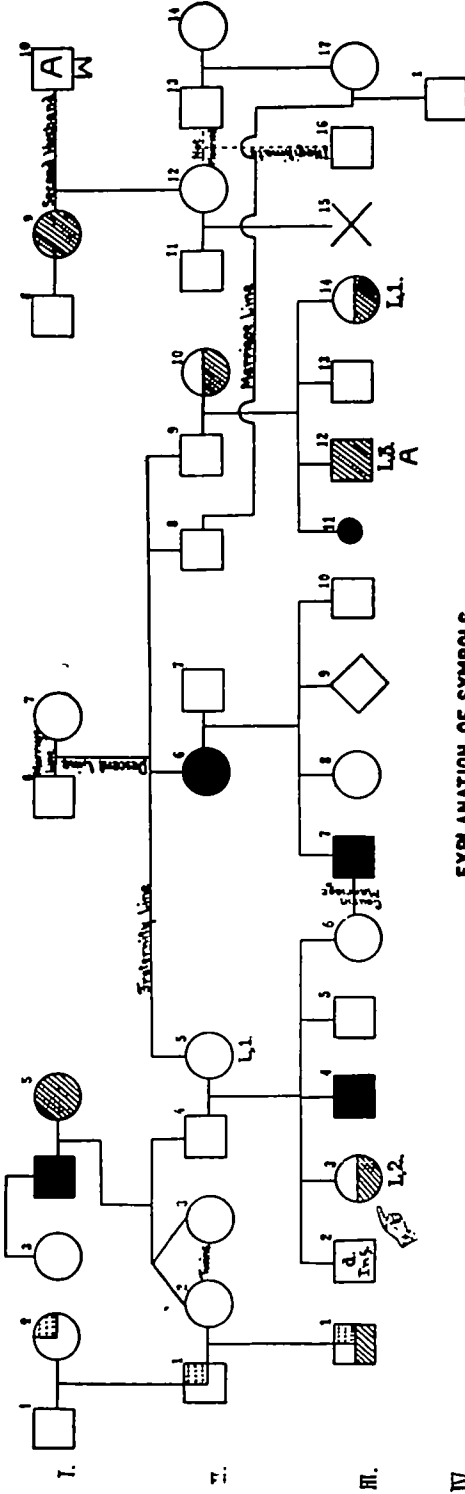
Six (more or less) delicious flavors in one pill — depending on who eats it. Adds interest and variety to the P. T. C. "Taster Test" which has been standard for several years to demonstrate inherited differences in taste perception. Send fifteen cents for a sample.

## AMERICAN GENETIC ASSOCIATION

1507 M Street, N. W.

Washington 5, D. C.

# SAMPLE PEDIGREE CHART SHOWING THE MANNER OF CONSTRUCTION, AND THE USE OF STANDARD AND SPECIAL SYMBOLS.



## EXPLANATION OF SYMBOLS

- Standard for all Pedigree Charts:**
- = Male; ○ = Female; ◇ = Sex unknown; ● = Still-born or Miscarriage; X = Children - number and sex unknown; ○ = Twins;
  - d. Inf. = Died in Infancy; P = Points to the Propositus or central figure in the pedigree.
  - ☐ = Parents.
  - ☐ = Children.
- Roman figures to the left indicate generations; Arabic figures locate individuals, (thus III. 7 is the young man in the third generation who married his cousin).
- The following letters, placed in or around the individual's pedigree symbol, are standard for certain traits: A, alcoholic; B, blind; D, deaf; E, epileptic; F, feeble-minded; I, insane; M, maimed; N, normal in reference to traits under consideration; Ne, neurotic; P, paralytic; Sx, sexually immoral; S, syphilitic; T, tuberculous; W, wanderer.
- (b) Especially devised or selected for this particular pedigree-chart:**
- ☐ = Successful leaders in politics.
  - ☐ = Extra thumb on right hand.
  - L. 1. = Highly successful author.
  - L. 3. = Lillie or no ability in literary efforts.
  - ☐ = Superior in vocal music.
  - ☐ = Medium attainment in vocal music.
- To fit the particular family and traits (whether physical, mental or temperamental; good or bad) under consideration, invent special symbols, or select special letters (in addition to those standardized under (a) above) to be placed within or near the particular individual's pedigree symbol, to indicate particular traits and their degree of development.