

# THE JOURNAL OF HEREDITY

AN ILLUSTRATED BI-MONTHLY PUBLICATION DEVOTED TO  
PLANT BREEDING, ANIMAL BREEDING AND EUGENICS

PUBLISHED BY THE  
AMERICAN GENETIC ASSOCIATION  
WASHINGTON, D. C.

---

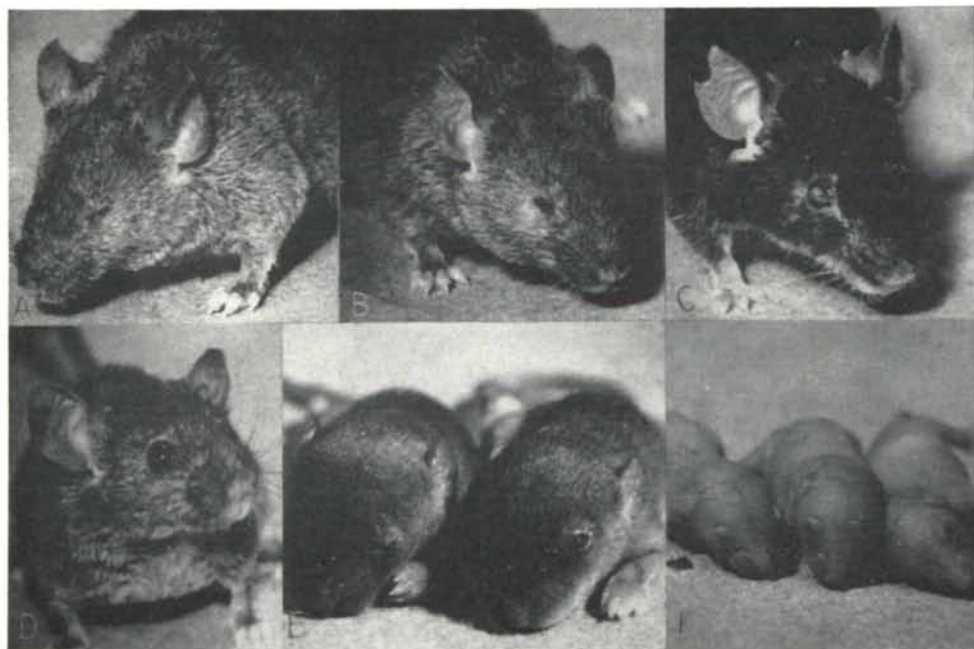
VOLUME XLIV

---

WASHINGTON, D. C.  
1953

*Copyright 1953*  
*by the*  
AMERICAN GENETIC ASSOCIATION

# The Journal of HEREDITY



## SQUINT CATARACT—A NEW MUTATION

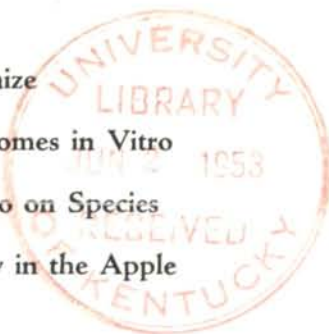
(SEE PAGE 13)

Mutant Maize

Mammalian Chromosomes in Vitro

Academician Lysenko on Species

Pattern of Tetraploidy in the Apple



VOLUME 44

JANUARY-FEBRUARY, 1953

NUMBER 1

# The American Genetic Association

*An incorporated organization devoted to promoting a knowledge of the laws of heredity and their application to the improvement of plants, animals, and human racial stocks*

Honorary Emeritus President, DAVID FAIRCHILD

RONALD BAMFORD, President

Vice-President, HAROLD H. PLOUGH

Honorary Vice-President, W. E. CASTLE

WALTER E. HESTON, Secretary

Treasurer, HAIG DERMEN

ROBERT C. COOK, Editor

Managing Editor, BARBARA LAKE

## EDITORIAL BOARD

J. T. BALDWIN, JR.

C. P. OLIVER

C. LEONARD HUSKINS

SHELDON C. REED

DELBERT T. MORGAN, JR.

JACK SCHULTZ

Members of the Council are ex-officio members of the Editorial Board

## COUNCIL

RONALD BAMFORD, Dean of the Graduate School, University of Maryland, College Park, Md.

Institute, U. S. Public Health Service, Bethesda, Md.

GEORGE M. DARROW, Horticulturist in Charge of Small-Fruit Breeding, Horticultural Field Station, Beltsville, Maryland.

H. J. MULLER, Professor of Zoology, Indiana University, Bloomington, Indiana.

HAIG DERMEN, Cytologist, Division of Fruit and Vegetable Crops and Diseases, Plant Industry Station, Beltsville, Maryland.

HUGH C. MCPHEE, Assistant Chief of Animal Husbandry Division, U. S. Department of Agriculture, Washington, D. C.

SAMUEL L. EMSWELLER, Principal Horticulturist, Division of Fruit and Vegetable Crops and Diseases, Plant Industry Station, Beltsville, Md.

HAROLD H. PLOUGH, Assistant Chief, Biology Branch, Division of Biology and Medicine, U. S. Atomic Energy Commission, Washington, D. C.

BENTLEY H. GLASS, Professor of Biology, Johns Hopkins University, Baltimore, Maryland.

MARCUS M. RHOADES, Professor of Botany, University of Illinois, Urbana, Illinois.

JAY L. LUSH, Professor of Animal Breeding, Iowa State College, Ames, Iowa.

LAURENCE H. SNYDER, Dean of the Graduate School, University of Oklahoma, Norman, Oklahoma.

WALTER E. HESTON, Geneticist, National Cancer

## ADVISORY COMMITTEE

E. B. BABCOCK, Genetics Department, University of California, Berkeley.

C. E. KEELER, Professor of Zoology, Georgia State College for Women, Milledgeville.

G. W. BEADLE, Chairman, Division of Biology, Calif. Institute of Technology, Pasadena.

L. W. LAW, Senior Scientist (Geneticist), National Cancer Institute, Bethesda, Md.

A. F. BLAKESLEE, Professor of Botany, Smith College, Northampton, Mass.

PHILIP LEVINE, Director, Biological Division, Ortho Research Foundation, Raritan, N. J.

R. A. BRINK, Chairman, Genetics Department, University of Wisconsin, Madison.

O. C. LITTLE, Director, Roscoe B. Jackson Memorial Laboratory, Bar Harbor, Maine.

LEONARD BUTLER, Professor of Genetics, University of Toronto, Canada.

L. F. RANDOLPH, Professor of Botany, Cornell University, Ithaca, N. Y.

TH. DOBZHANSKY, Professor of Zoology, Columbia University, New York City.

PAUL B. SAWIN, Research Associate, Jackson Memorial Laboratory, Bar Harbor, Maine.

O. M. GOETHE, Sacramento, California.

KARL SAX, Professor of Botany, Harvard University, Arnold Arboretum, Jamaica Plain, Mass.

C. N. HERNDON, Director, Out-Patient Dept., Bowman Gray School of Medicine, Winston-Salem, N. C.

JOHN W. SCOTT, Professor of Zoology, University of Wyoming, Laramie.

HARRISON R. HUNT, Professor of Zoology, Michigan State College, East Lansing.

EDMUND W. SINNOTT, Professor of Botany, Yale University, New Haven, Conn.

F. B. HUTT, Professor of Animal Genetics, Cornell University, Ithaca, N. Y.

RAMSAY SPILLMAN, M.D., New York City.

D. F. JONES, Plant Breeder, Connecticut Agricultural Experiment Station, New Haven.

E. N. WENTWORTH, Armour's Bureau of Agr'l Research and Economics, Chicago, Illinois.

M. A. JULL, Professor of Poultry Husbandry, University of Maryland, College Park.

P. W. WHITING, Zoological Laboratory, University of Pennsylvania, Philadelphia.

F. J. KALLMANN, M.D., Research Scientist, New York State Psychiatric Institute, New York City.

G. W. WOOLLEY, Head, Division of Steroid Biology, Sloan-Kettering Institute, New York City.  
CONWAY ZIRKLE, Professor of Botany, University of Pennsylvania, Philadelphia.

The JOURNAL OF HEREDITY is published bi-monthly by the AMERICAN GENETIC ASSOCIATION at 32nd Street and Elm Avenue, Baltimore 11, Md., and 1507 M St., N. W., Washington 5, D. C. Address all communications regarding editorial matters to 1507 M St., N. W., Washington, D. C. Communications regarding the business management of THE JOURNAL OF HEREDITY may be addressed to the publication office, 32nd Street and Elm Avenue, Baltimore, Md., or to 1507 M St., N. W., Washington 5, D. C. Entered as second-class matter February 24, 1933, at the postoffice at Baltimore, Maryland. Acceptance for mailing at the special rate of postage provided for in section 1103, Act of October 3, 1917, authorized December 29, 1918. Contents copyrighted 1933 by the American Genetic Association. Unauthorized reproduction of material from THE JOURNAL not permitted. The title "Journal of Heredity" is registered as a trade-mark in the U. S. Patent Office. \$7.00 a Year. \$1.50 a copy. Prices of back numbers on application.

*The*  
**Journal of Heredity**

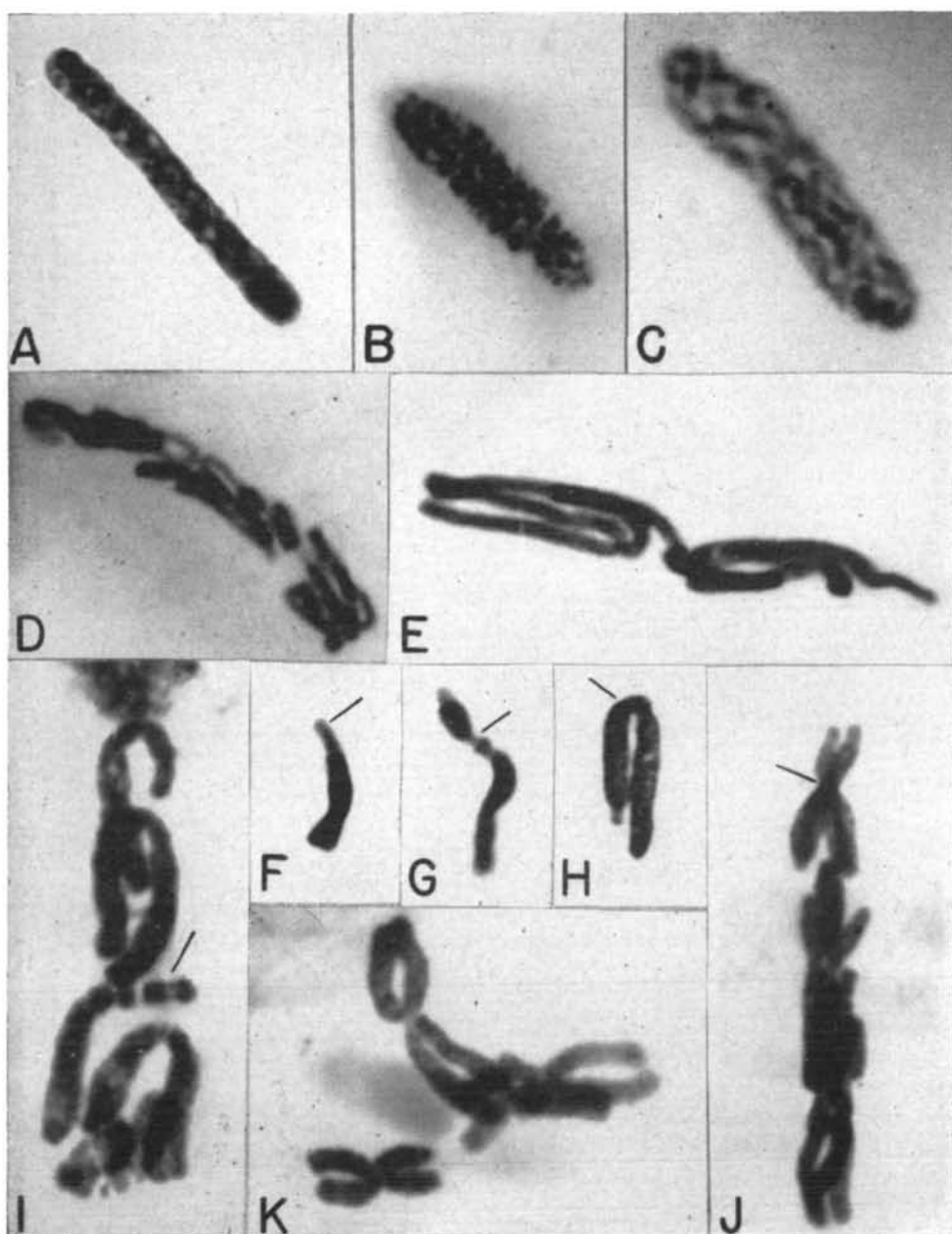
Vol. XLIV

JANUARY-FEBRUARY, 1953

No. 1

CONTENTS

THE REACTION OF TRILLIUM POLLEN-TUBE CHROMOSOMES TO COLD TREATMENT DURING MITOSIS By <i>E. R. Boothroyd</i> .....	3
THE EFFECT OF LIGHT ON THE EXPRESSION OF HETEROISIS By <i>W. J. Haney, J. B. Gartner and G. B. Wilson</i> .....	10
A NEW EYE ABNORMALITY IN THE HOUSE MOUSE By <i>L. Butler and D. A. Robertson</i> .....	13
CYTOGENETIC STUDY OF A MUTANT MAIZE F <sub>1</sub> PLANT By <i>Lee Ford</i> .....	17
MAMMALIAN CHROMOSOMES IN VITRO. II. A METHOD FOR SPREADING THE CHROMOSOMES OF CELLS IN TISSUE CULTURE By <i>T. C. Hsu and C. M. Pomerat</i> .....	23
THE PATTERN OF TETRAPLOIDY IN THE FLOWER AND FRUIT OF A CYTOCHIMERAL APPLE By <i>Haig Dermen</i> .....	31
A DIRECT PROOF OF THE RELATION BETWEEN GENOTYPIC MATING CORRELATION AND GAMETIC UNITING CORRELATION IN EQUILIBRIUM POPULATIONS By <i>C. C. Li</i> .....	39
TWO NON-ALLELIC MUTANTS RESEMBLING "W" IN THE HOUSE MOUSE By <i>Leonell C. Strong and W. F. Hollander</i> .....	41
Notes and Reviews	
LYSENKO PROGRESSES BACKWARDS By <i>Theodosius Dobzhansky</i> .....	20
OH, SPINACH! .....	22
THE TWENTY-FOURTH ANNUAL MEETING OF THE GENETICS SOCIETY OF JAPAN By <i>Kosuke Yamashita and R. A. Nilan</i> .....	29
GENETICS CONGRESS TRAVEL GRANTS ANNOUNCED .....	44



### POLLEN TUBE MITOSIS AT DIFFERENT TEMPERATURES

Figure 1

*A*—Generative nucleus in interphase. *B*, *C* and *D*—Prophase: beginning of early, mid and late prophase, respectively. *E*—Metaphase at room temperature—chromosomes long and thin. *F-K*—Metaphase chromosomes at low temperature (*F* at 3°C., *G-K* at 6°C.); kinetochores indicated by lines. *I*—the *A* chromosome with three separate differentiated segments and *F*—two such segments partially “fused.” *G*—the most common pattern in the *B* chromosome, the short arm with a terminal and the long arm with an interstitial region differentiated. *J*—the *C* chromosome with chromatids widely separated and the end of the short arm differentiated. *H*—the typical pattern of the *D* chromosome, the short arm with one terminal, the long arm with one interstitial segment differentiated. *K*—an unusual colchicine-type effect occasionally seen after cold treatment. Magnification 1275 $\times$ .